

# Weldplus

## По вопросам продаж и поддержки обращайтесь:

Алматы (7273)495-231  
Архангельск (8182)63-90-72  
Астрахань (8512)99-46-04  
Барнаул (3852)73-04-60  
Белгород (4722)40-23-64  
Брянск (4832)59-03-52  
Владивосток (423)249-28-31  
Волгоград (844)278-03-48  
Вологда (8172)26-41-59  
Воронеж (473)204-51-73  
Екатеринбург (343)384-55-89  
Иваново (4932)77-34-06  
Ижевск (3412)26-03-58  
Иркутск (395)279-98-46  
Россия (495)268-04-70

Казань (843)206-01-48  
Калининград (4012)72-03-81  
Калуга (4842)92-23-67  
Кемерово (3842)65-04-62  
Киров (8332)68-02-04  
Краснодар (861)203-40-90  
Красноярск (391)204-63-61  
Курск (4712)77-13-04  
Липецк (4742)52-20-81  
Магнитогорск (3519)55-03-13  
Москва (495)268-04-70  
Мурманск (8152)59-64-93  
Набережные Челны (8552)20-53-41  
Нижний Новгород (831)429-08-12  
Киргизия (996)312-96-26-47

Новокузнецк (3843)20-46-81  
Новосибирск (383)227-86-73  
Омск (3812)21-46-40  
Орел (4862)44-53-42  
Оренбург (3532)37-68-04  
Пенза (8412)22-31-16  
Пермь (342)205-81-47  
Ростов-на-Дону (863)308-18-15  
Рязань (4912)46-61-64  
Самара (846)206-03-16  
Санкт-Петербург (812)309-46-40  
Саратов (845)249-38-78  
Севастополь (8692)22-31-93  
Симферополь (3652)67-13-56  
Казахстан (7172)727-132

Смоленск (4812)29-41-54  
Сочи (862)225-72-31  
Ставрополь (8652)20-65-13  
Сургут (3462)77-98-35  
Тверь (4822)63-31-35  
Томск (3822)98-41-53  
Тула (4872)74-02-29  
Тюмень (3452)66-21-18  
Ульяновск (8422)24-23-59  
Уфа (347)229-48-12  
Хабаровск (4212)92-98-04  
Челябинск (351)202-03-61  
Череповец (8202)49-02-64  
Ярославль (4852)69-52-93

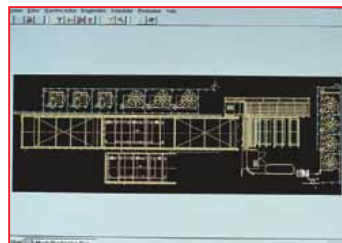
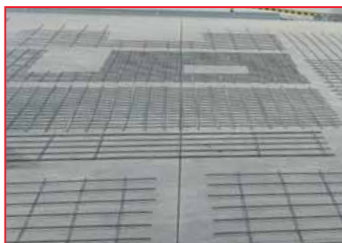
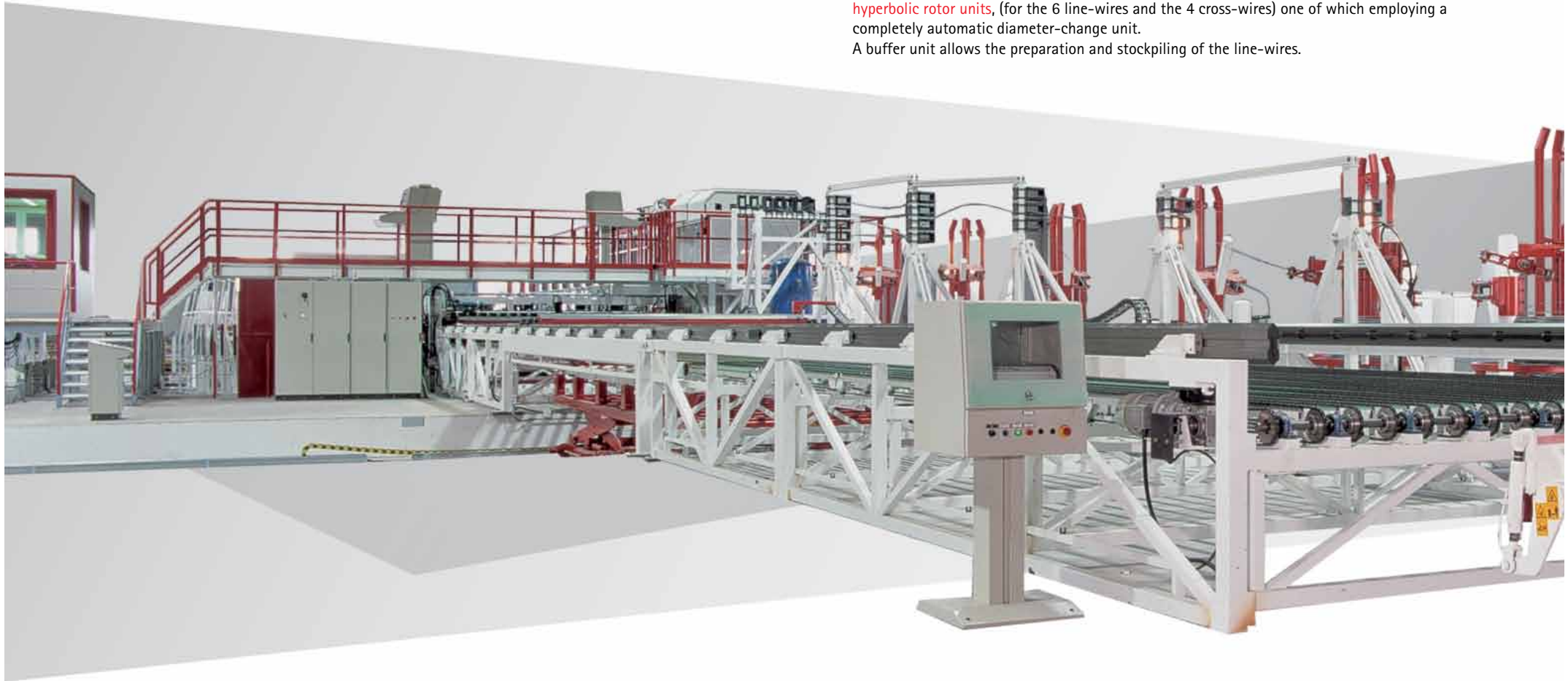
# Weldplus

A completely automatic and electronically-programmable plant for the production of special electrowelded mesh panels used typically in the prefabrication industry.

Within a single mesh panel the line-wires (up to 8 metres) and also the cross-wires (up to 4 metres) may have a variety of lengths, diameters and spacings/pitch.

It is therefore possible to produce any form (with its predetermined holes, windows or openings) within the limits of the maximum dimensions specified and the availability of weldable wire of the different diameters from coil. The straightening is guaranteed by the use of two multi-line hyperbolic rotor units, (for the 6 line-wires and the 4 cross-wires) one of which employing a completely automatic diameter-change unit.

A buffer unit allows the preparation and stockpiling of the line-wires.



A patented chain device with automatic bar clamping devices determines the independent placing (by number and position) of the line-wires while another patented device positions the different length and diameter cross-wires.

The welding operation is carried out by means of a unique and patented device fitted with independent and adjustable welding pistons (horizontal and vertical). The adoption of these innovative systems guarantees maximum flexibility and quality within the ambit of specific production requirements.

# Technical and production characteristics



- Multi-line straightening-and-cutting unit with 6 hyperbolic rotors for line-wires.



- Buffer unit for the transfer and stockpiling of line-wires.



- Chain device (patented) with automatic bar clamping devices for the independent placing (by number and position) of the line-wires.



- Multi-line straightening-and-cutting unit (cross-wires) with 4 hyperbolic rotors and a completely automatic diameter-change unit.



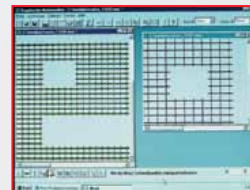
- The universal welding unit (patented) is characterized by the adoption of a unique device which allows independent movement in both the vertical and horizontal planes of the individual welding pistons. This allows the realization of mesh elements with cross-wires positioned and welded either above or below the line-wires.



- Mesh-expulsion device and transfer of mesh elements produced



- Evacuation cart and stacking of completed mesh elements.

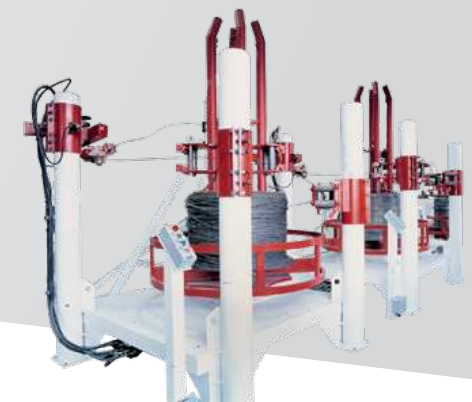


- Electronic industrial P.C. programmer, furnished with a user-friendly windows type software. Data insertion (also from an external station via network LAN) with graphic display of the programmed or pre-memorized elements. Saving and storage of data relative to the work cycles.  
"Active diagnostic" system for a constant check on the efficiency of each section of the plant.

- Workable diameters (others on request with consequent price differences):  
line-wires from 6 to 16mm; cross-wires from 6 to 12 mm.

- Mesh element dimensions:  
line-wire length from 300 mm to 8000 (other dimensions on request with consequent price difference)  
cross-wire length from 250 mm to 4000 mm.  
minimum pitch (for both line- and cross-wires) is 50 mm.

- Payoffs, controlled according to the work cycle.





# Weldplus S

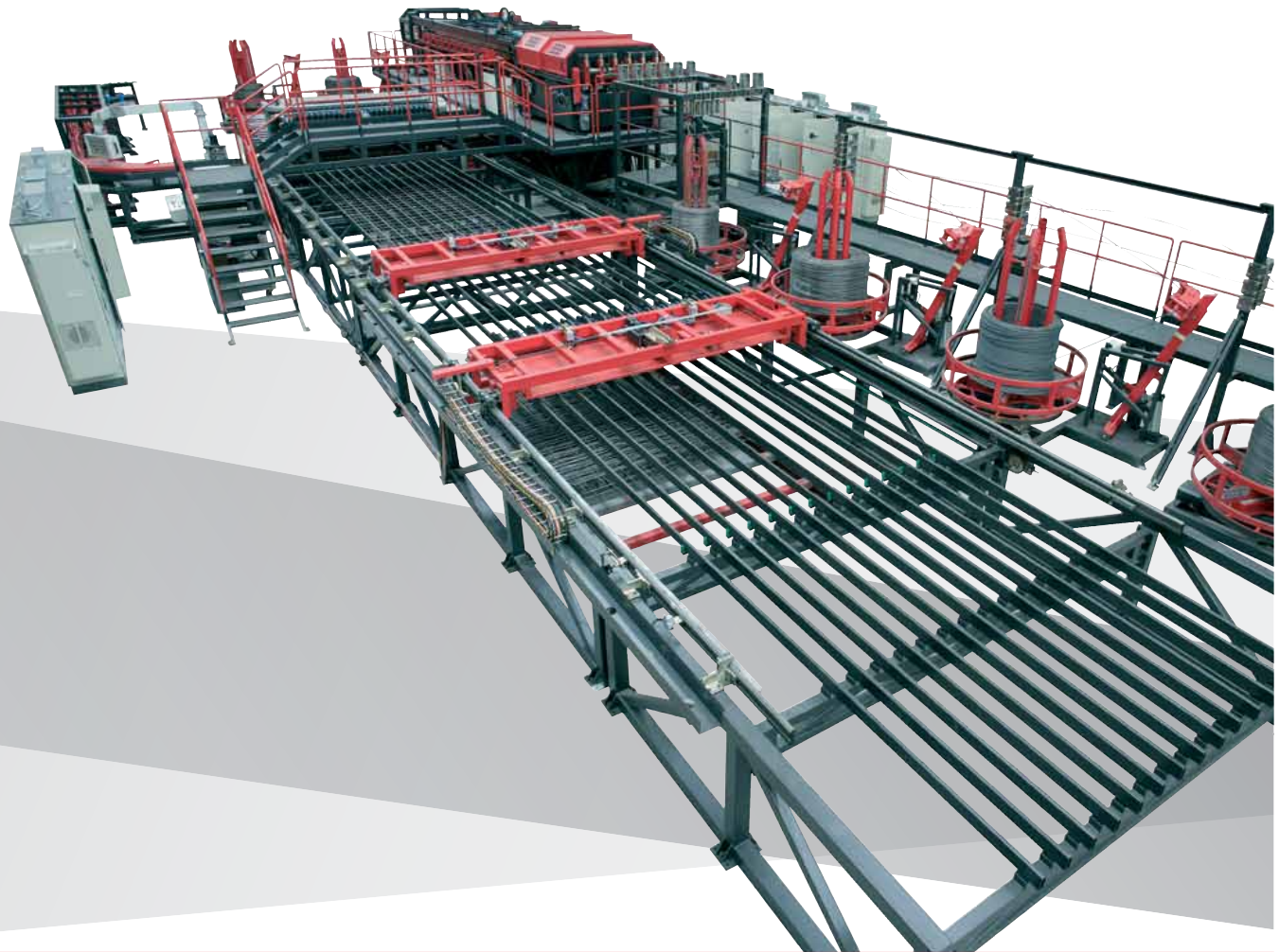
The **WELDPLUS S** plant is the latest generation of highly flexible and fully automatic off-coil machines targeted for the production of any type of mesh in panel format. Both the line and cross wire requirements are met directly from coil material of either smooth or ribbed cold drawn/rolled wire or hot rolled wire. The key characteristic of the **WELDPLUS S** plant lies in its complete flexibility in changing from one type of mesh to another and from one size of wire to another without requiring any set-up times. The **WELDPLUS S** automatically changes from one line wire and/or cross wire size to another, from one mesh width to another, from one mesh length to another or from one internal line and/or cross wire pitch size set-up to another; all without requiring any down-time or operator intervention. Any type of mesh panel can be produced with this machine be it standard, special, structural or engineered.

The modularity of the machine means that the plant can be customised to suit the different requirements of clients.

Generally the broad specifications of the Weldplus plant are:

- between 2 and 8 different line wire diameter sizes can be processed automatically;
- between 2 and 5 different cross wire diameter sizes can be processed automatically;
- the line wire diameter range which can be covered is from 4mm to 16mm;
- the cross wire diameter range which can be covered is from 4mm to 12mm;
- the mesh widths which can be handled are from 400mm to 3000mm;
- the mesh lengths which can be handled are from 1000mm upwards;
- the internal line wire pitch size can be anything from 50mm upwards in steps of 50mm;
- the internal cross wire pitch size can be anything from 50mm upwards;
- the machine automatically changes between different mesh types or pitch sizes or wire sizes.

Obviously the **WELDPLUS S** plant can be coupled to a variety of complimentary accessories and/or evacuation or mesh collection systems according to specific client requirements.



Алматы (7273)495-231  
Архангельск (8182)63-90-72  
Астрахань (8512)99-46-04  
Барнаул (3852)73-04-60  
Белгород (4722)40-23-64  
Брянск (4832)59-03-52  
Владивосток (423)249-28-31  
Волгоград (844)278-03-48  
Вологда (8172)26-41-59  
Воронеж (473)204-51-73  
Екатеринбург (343)384-55-89  
Иваново (4932)77-34-06  
Ижевск (3412)26-03-58  
Иркутск (395)279-98-46  
Россия (495)268-04-70

Казань (843)206-01-48  
Калининград (4012)72-03-81  
Калуга (4842)92-23-67  
Кемерово (3842)65-04-62  
Киров (8332)68-02-04  
Краснодар (861)203-40-90  
Красноярск (391)204-63-61  
Курск (4712)77-13-04  
Липецк (4742)52-20-81  
Магнитогорск (3519)55-03-13  
Москва (495)268-04-70  
Мурманск (8152)59-64-93  
Набережные Челны (8552)20-53-41  
Нижний Новгород (831)429-08-12  
Киргизия (996)312-96-26-47

Новокузнецк (3843)20-46-81  
Новосибирск (383)227-86-73  
Омск (3812)21-46-40  
Орел (4862)44-53-42  
Оренбург (3532)37-68-04  
Пенза (8412)22-31-16  
Пермь (342)205-81-47  
Ростов-на-Дону (863)308-18-15  
Рязань (4912)46-61-64  
Самара (846)206-03-16  
Санкт-Петербург (812)309-46-40  
Саратов (845)249-38-78  
Севастополь (8692)22-31-93  
Симферополь (3652)67-13-56  
Казахстан (7172)727-132

Смоленск (4812)29-41-54  
Сочи (862)225-72-31  
Ставрополь (8652)20-65-13  
Сургут (3462)77-98-35  
Тверь (4822)63-31-35  
Томск (3822)98-41-53  
Тула (4872)74-02-29  
Тюмень (3452)66-21-18  
Ульяновск (8422)24-23-59  
Уфа (347)229-48-12  
Хабаровск (4212)92-98-04  
Челябинск (351)202-03-61  
Череповец (8202)49-02-64  
Ярославль (4852)69-52-93

**По вопросам продаж и поддержки обращайтесь:**